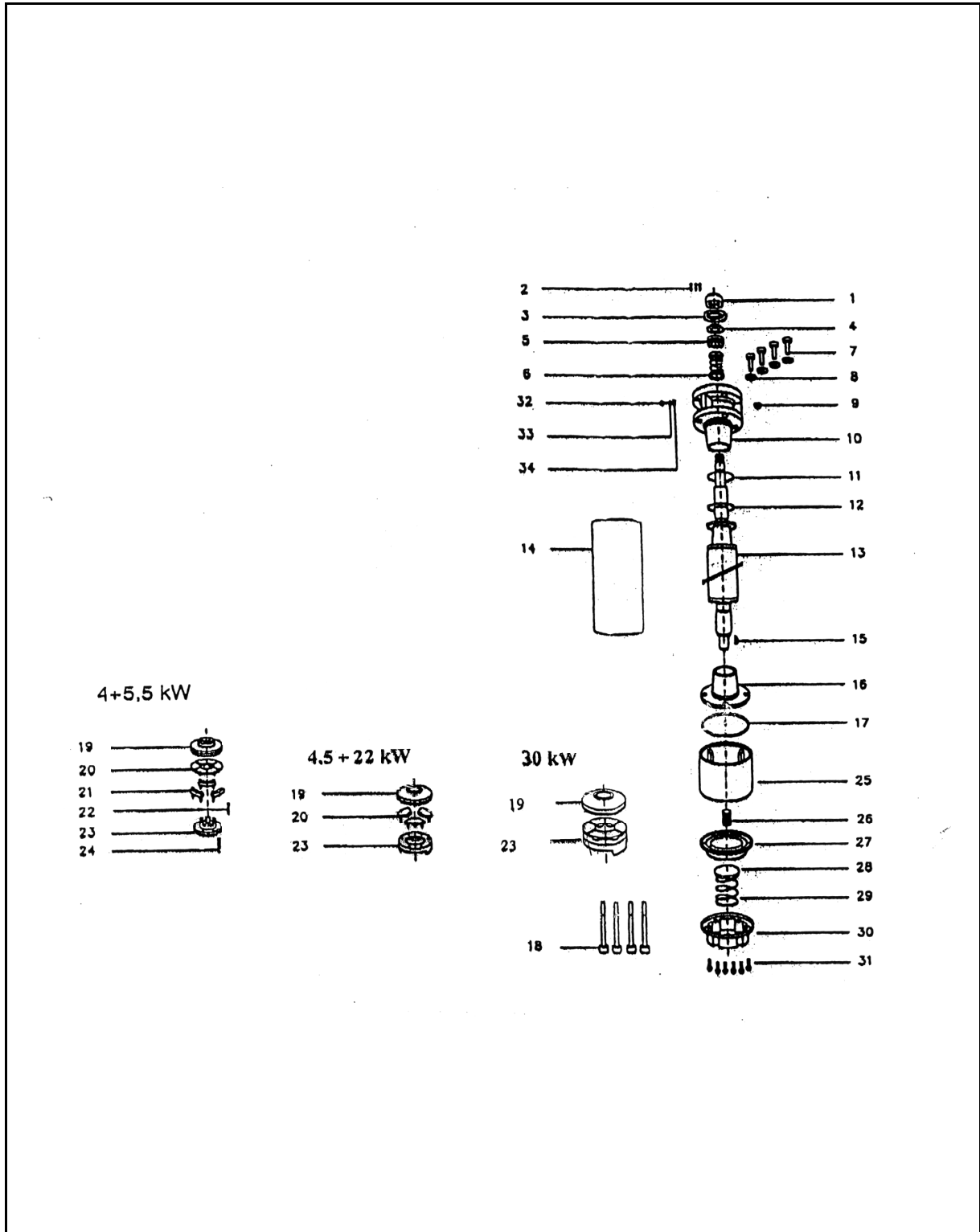




Motore Sommerso 6" Serie F6 (3~, 50Hz, 4 - 30 kW)
F6 Submersible Motor 6" Series (3~, 50Hz, 4 - 30 kW)



Lowara





LISTA PARTI DI RICAMBIO - SPARE PARTS LIST

Motore Sommerso 6" Serie F6 (3~, 50Hz, 4 - 30 kW, 400V, avviamento DOL)
F6 Submersible Motor 6" Series (3~, 50Hz, 4 - 30 kW, 400V, starting DOL)

| N.Rif. Item N. | Descrizione | Description | Q.tà Q.ty | Codice - Code | | | | | | | | | | | | |
|-------------------|-------------|---------------------------------|------------------------------|---------------|--------------|---------------|---------------|--------------|--------------|----------------|--------------|--------------|--------------|--------------|-----|--|
| | | | | F605T534 | F607T534 | F610T534 | F612T534 | F615T534 | F620T534 | F625T534 | F630T534 | F640T534 | F650T534 | F660T534 | | |
| | | | | 107047003 | 107047013 | 107047023 | 107047033 | 107047043 | 107047053 | 107047063 | 107047073 | 107047083 | 107047093 | 107047103 | | |
| | | | | 4 kW (5HP) | 5,5 kW (7HP) | 7,5 kW (10HP) | 9,2 kW (12HP) | 11 kW (15HP) | 15 kW (20HP) | 18,5 kW (25HP) | 22 kW (30HP) | 30 kW (40HP) | 37 kW (50HP) | 45 kW (60HP) | | |
| * | 1 | Anello di tenuta | Slinger | 1 | KIT C | | | | | | | | | | | |
| | 2 | Vite del coperchio | Screw, seal | 3 | KIT C | | | | | | | | | | | |
| | 3 | Coperchio, guarnizione | Cover, seal | 1 | KIT C | | | | | | | | | | | |
| | 4 | Disco di tenuta | Bushing seal cover | 1 | KIT C | | | | | | | | | | | |
| * | 5 | Tenuta mecc. parte fissa | Seal, stationary part | 1 | KIT B | | | | | | | | | | | |
| * | 6 | Tenuta mecc. parte rotante | Seal, rotating part | 1 | KIT B | | | | | | | | | | | |
| | 7 | Vite | Screw | 4 | KIT D | | | | | | | | | | | |
| | 8 | Rondella elastica | Lockwasher | 4 | KIT D | | | | | | | | | | | |
| | 9 | Filtro | Filter | 1 | 187040690 | | | | | | | | | | | |
| | 10 | Flangia superiore | Top Endbell | 1 | 187040700 | | | | | | | | | | | |
| * | 11 | OR | OR | 1 | KIT B | | | | | | | | | | | |
| | 12 | Disco reggispinta | Upthrust washer | 1 | 18704-071-0 | | | | | | | | | | | |
| | 13 | Albero con rotore | Rotor assembly | 1 | 187040720 | 187040730 | 187040740 | O/R | 187040750 | 187040760 | 187040770 | 187040780 | 187040790 | O/R | O/R | |
| | 14 | Pacco statore (380/415 V) | Stator assembly (380/415 V) | 1 | 187040800 | 187040810 | 187040820 | O/R | 187040830 | 187040840 | 187040850 | 187040860 | 187040870 | O/R | O/R | |
| | 15 | Linguetta a disco | Woodruff key | 1 | 187040880 | | | | 187040885 | | | | | | | |
| | 16 | Flangia inferiore | End bell, Lower | 1 | 187040890 | | | | | | | | | | | |
| * | 17 | OR | OR | 1 | KIT B | | | | | | | | | | | |
| | 18 | Vite, allogg. cusc. reggispinta | Screw, thrust housing | 4 | KIT D | | | | | | | | | | | |
| | 19 | Cuscinetto reggispinta | Thrust disc, assy | 1 | KIT A1 | | | | KIT A2 | | | KIT A3 | | | | |
| | 20 | Pattini oscillanti | Segment, assy | 6 | KIT A1 | | | | KIT A2 | | | KIT A3 | | | | |
| | 21 | Leva oscillante | Rocker arm | 3 | 187040900 | | | | - | | | | | | | |
| | 22 | Perno della leva oscillante | Pin, rocker arm | 6 | 187040910 | | | | - | | | | | | | |
| | 23 | Bilancere | Adapter sleeve | 1 | 187040920 | | | | 187040925 | | | | | | | |
| | 24 | Perno | Pin | 1 | 187040930 | | | | - | | | | | | | |
| | 25 | Allogg. cuscin. reggispinta | Thrust housing | 1 | 187040940 | | | | 187040945 | | | | | | | |
| | 26 | Perno a vite | Screw adjusting | 1 | 187040950 | | | | | | | | | | | |
| | 27 | Diaframma | Diaphragm | 1 | KIT B | | | | | | | | | | | |
| | 28 | Disco diaframma (sulla molla) | Cup spring, diaphragm | 1 | 187040960 | | | | | | | | | | | |
| | 29 | Molla | Spring | 1 | 187040970 | | | | | | | | | | | |
| | 30 | Fondello | Cover, diaphragm | 1 | 187040980 | | | | | | | | | | | |
| | 31 | Vite fondello | Screw, cover, diaphragm | 6 | KIT D | | | | | | | | | | | |
| | 32 | Vite di terra | Screw, ground | 1 | 187040990 | | | | | | | | | | | |
| | 33 | Rondella elastica | Lockwasher, ground | 1 | 187041000 | | | | | | | | | | | |
| | 34 | Serra-filo | Square washer | 1 | 187041010 | | | | | | | | | | | |

* Parti di ricambio consigliate - Recommended spare parts

O/R = A Richiesta, On Request

| KITS | Description | Part Name | Posizione - Position | Codice - Code |
|------|-----------------------------------|---------------------|----------------------|---------------|
| A1 | Reggispinta | Thrust bearing | 19 + 20 | 187041020 |
| A2 | Reggispinta | Thrust bearing | 19 + 20 | 187041030 |
| A3 | Reggispinta | Thrust bearing | 19 + 20 | 187041031 |
| B | Guarnizioni / Tenute(fino a 1993) | Seals (up to 1993) | 5 + 6 + 11 + 17 + 27 | 187041040 |
| B1 | Guarnizioni / Tenute (da 1994) | Seals (since 1994) | 5 + 6 + 11 + 17 + 27 | 187041041 |
| C | Anelli di tenuta | Slinger | 1 + 2 + 3 + 4 | 187041050 |
| D | Kit viteria | Screws Kit | 7 + 8 + 18 + 31 | 187041060 |